

Artecy

CROSS STITCH

Mini West Highland Terrier in a Garden



* Original image© T Clarke using Midjourney AI
Cross Stitch Design by Tereena Clarke.

Completed Size = 150w x 150h Stitches

14 Count, 11w x 11h inches (28cm x 28cm)

16 Count, 9.5w x 9.5h inches (24cm x 24cm)

18 Count, 8.5w x 8.5h inches (22cm x 22cm)

Uses 73 DMC cotton colours. Only full cross stitches are used in this pattern.

Pattern Instructions

* This pattern can be worked on any fabric type, colour or count you prefer. To work out the size of the finished article, take the number of stitches wide and high and divide it by the count of your fabric (e.g. 14,16,18 count aida etc) to get the size in inches. Times it by 2.54 to get centimetres. We have the sizes in inches shown on the previous page. Also leave at least a few inches of fabric around each side of the design to assist in framing. The higher the fabric count the smaller the completed project will be.

* To put the pattern together look in the top and bottom corners. The page numbers in brackets show which page number it joins up to. Page 1 always starts at the top left hand side of the pattern. Our pages also have a shaded grey section. This indicates a 3 row overlap from adjoining pages to assist with reading the pattern. PLEASE DO NOT RESTITCH THIS AREA.

* You should begin at the centre of the pattern. To find the centre of the pattern it is just a matter of laying the pattern out and locating the arrows at the top and left hand side of the patterns, they are determined by dividing the stitch numbers wide and high in half. Where the two points meet in the middle, that is the centre.

* If you need more assistance to find the middle of your pattern or the page layout, please see the notes section on the colour symbol chart. The easiest way to stitch this pattern, as it has multiple pages, is to stitch one page at a time.

* We suggest using two strands of floss for each stitch and one strand for backstitching if the pattern calls for it.

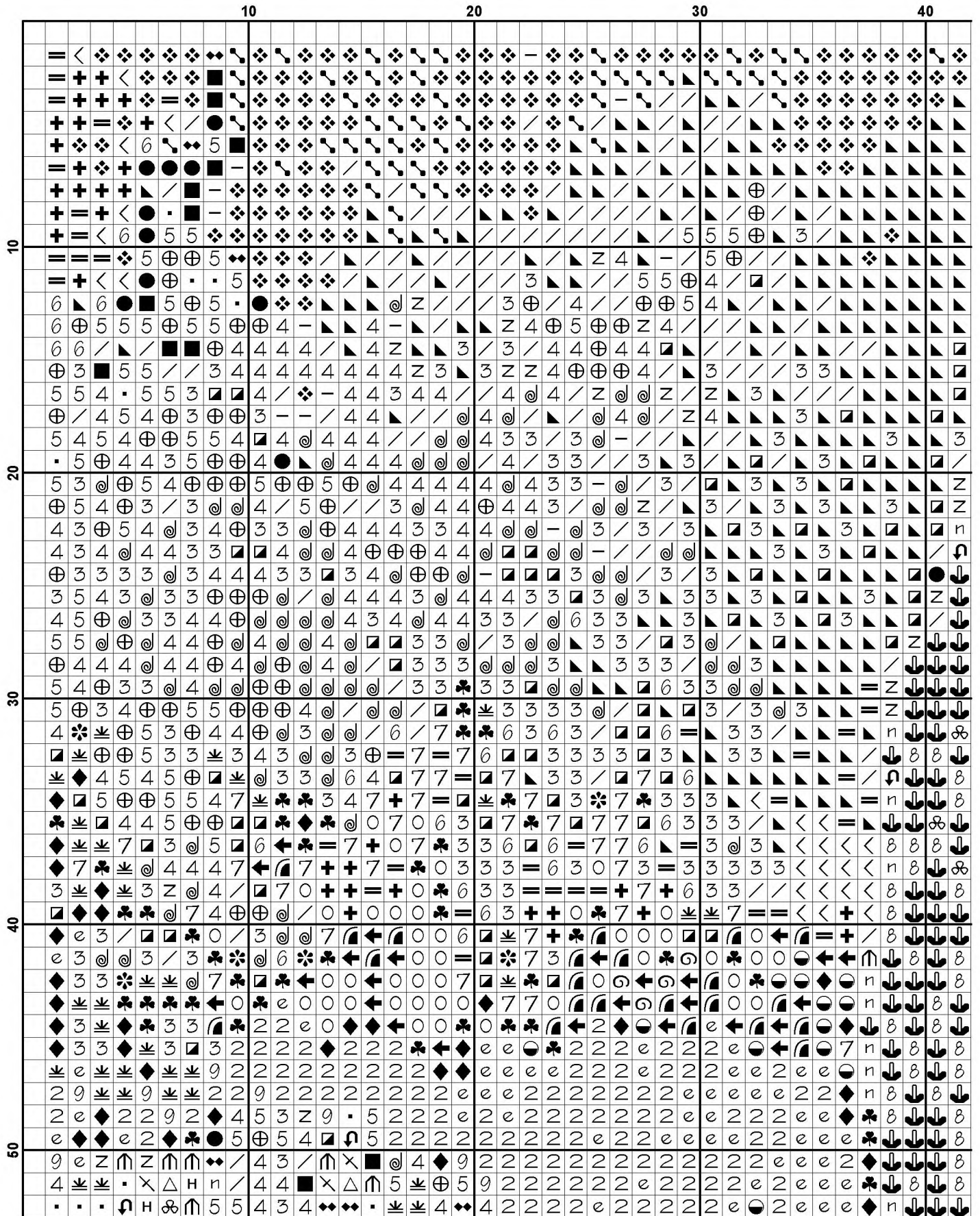
We hope you enjoy stitching our pattern.

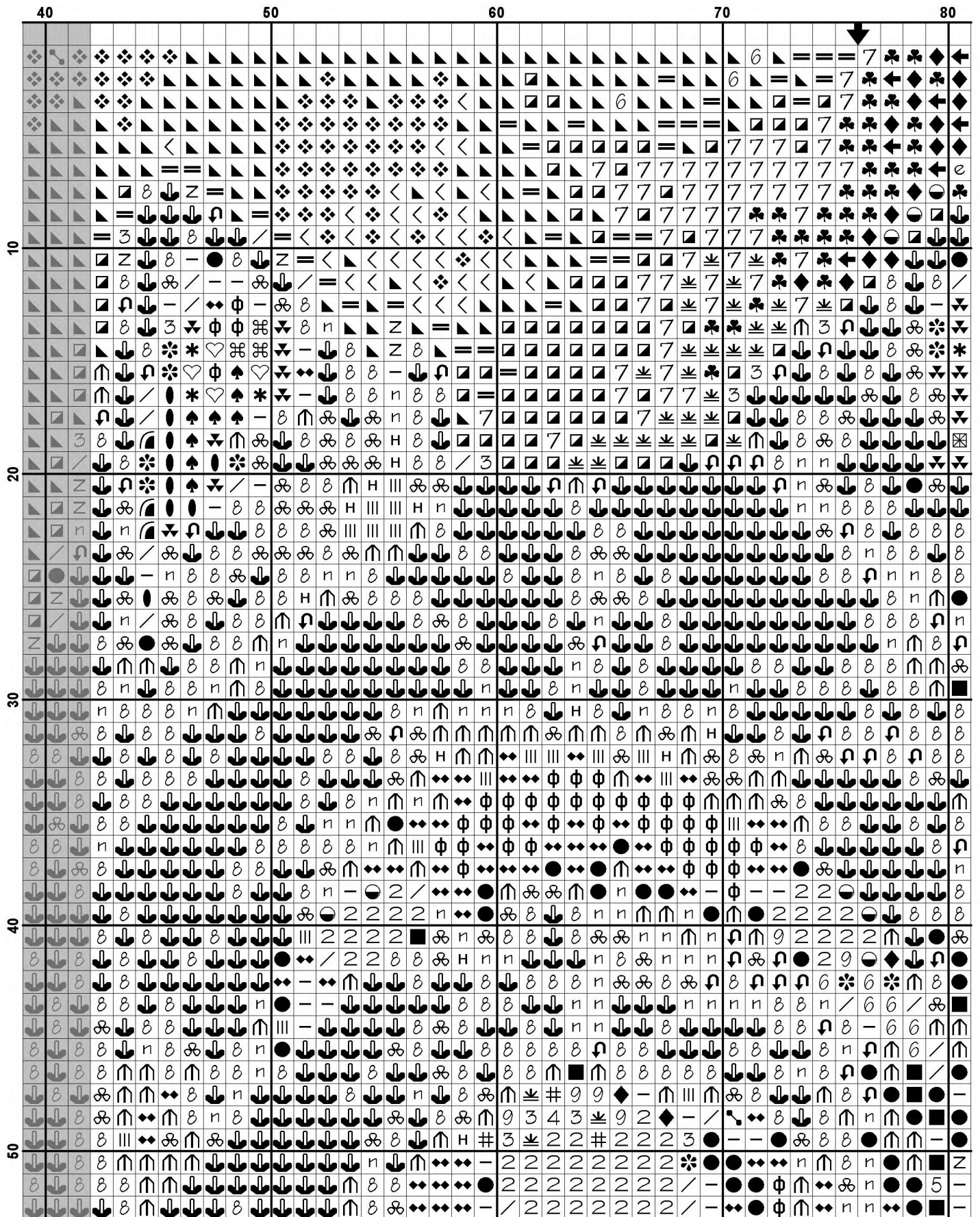
Thanks and Best Wishes
Tereena Clarke

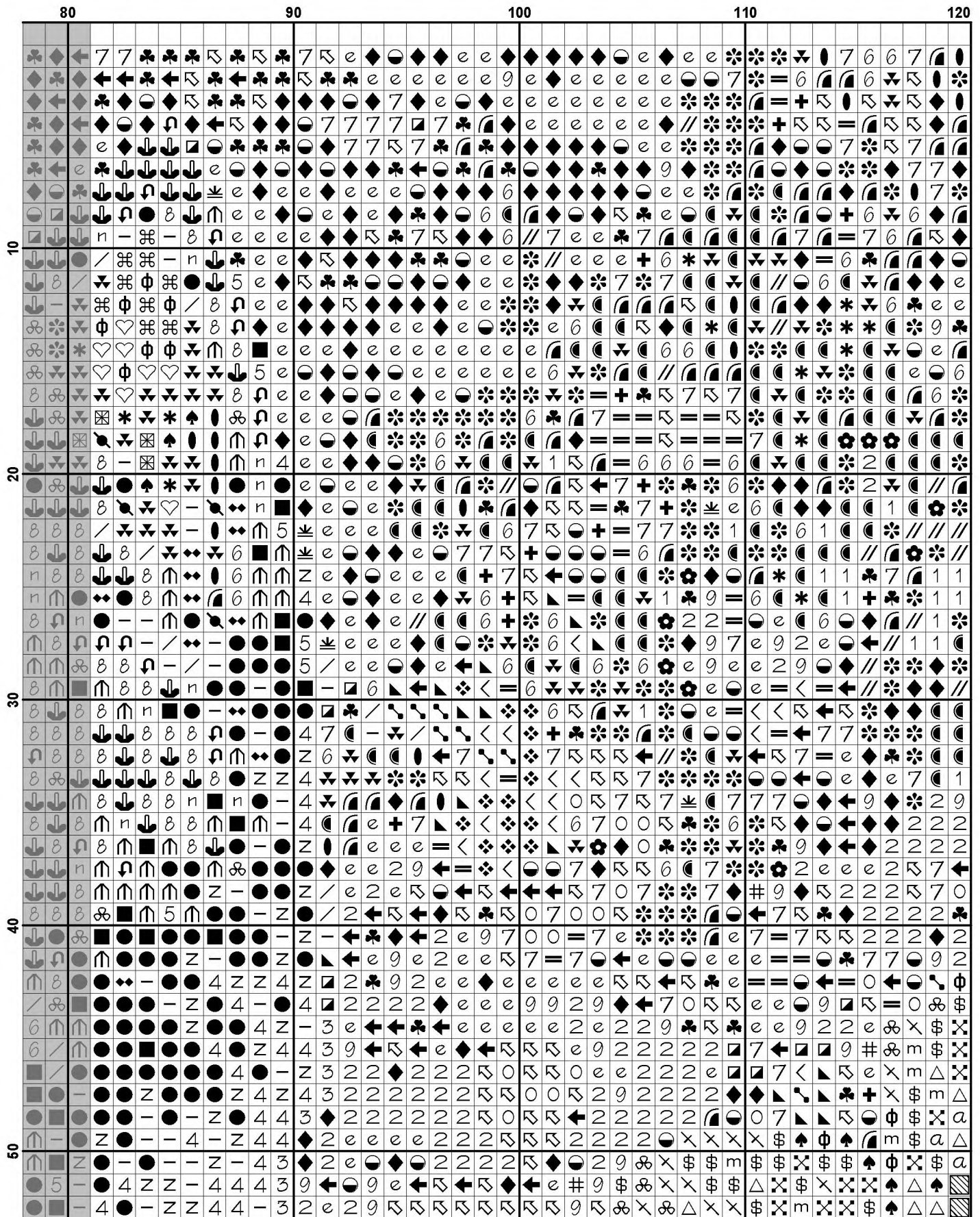
Artecy Cross Stitch
Po Box 3474
Tuggerah, NSW 2259
Australia

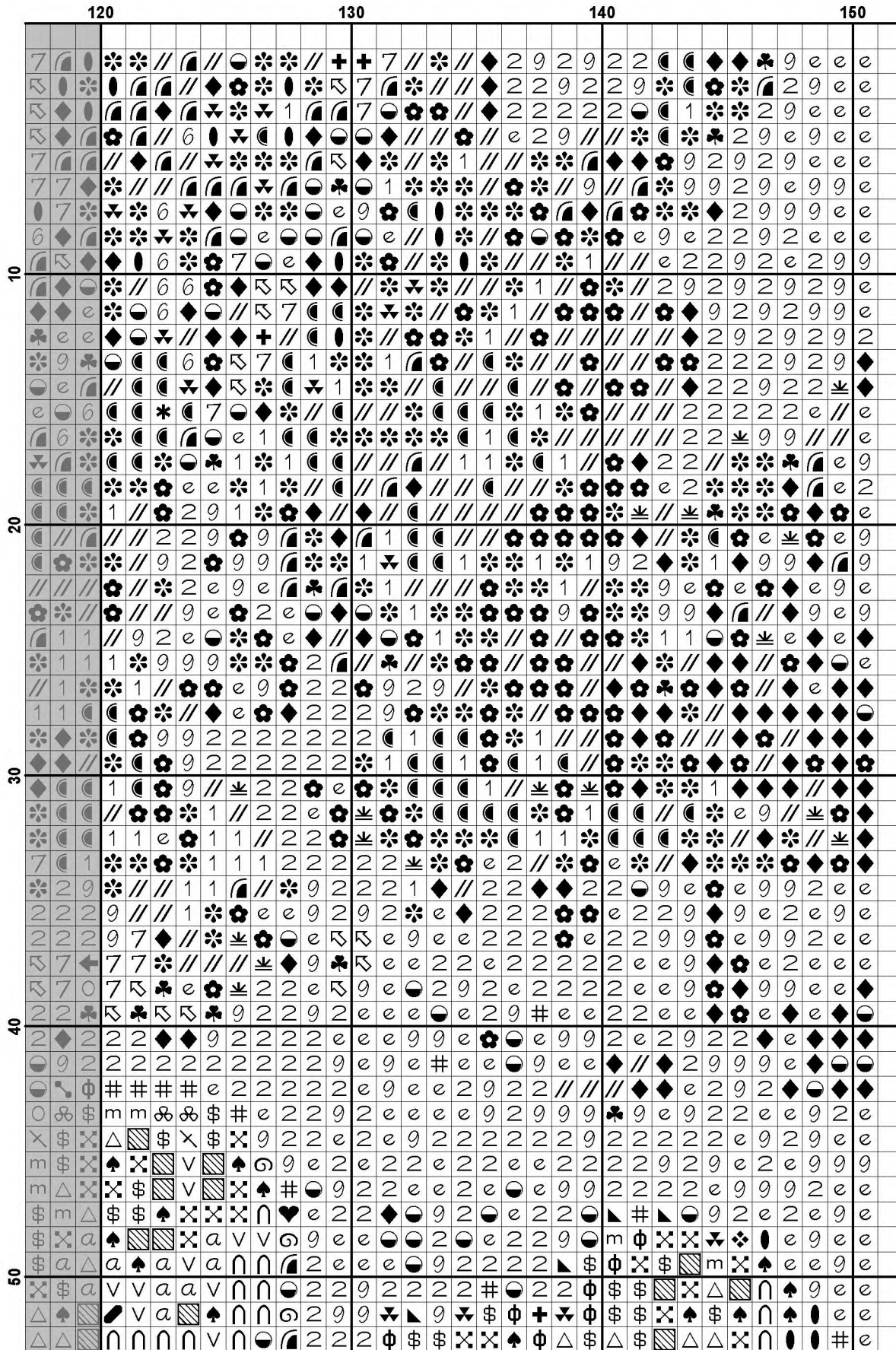
Websites: www.artecy.com and www.artecyshop.com
Email: artecy@artecy.com or stitch@artecyshop.com

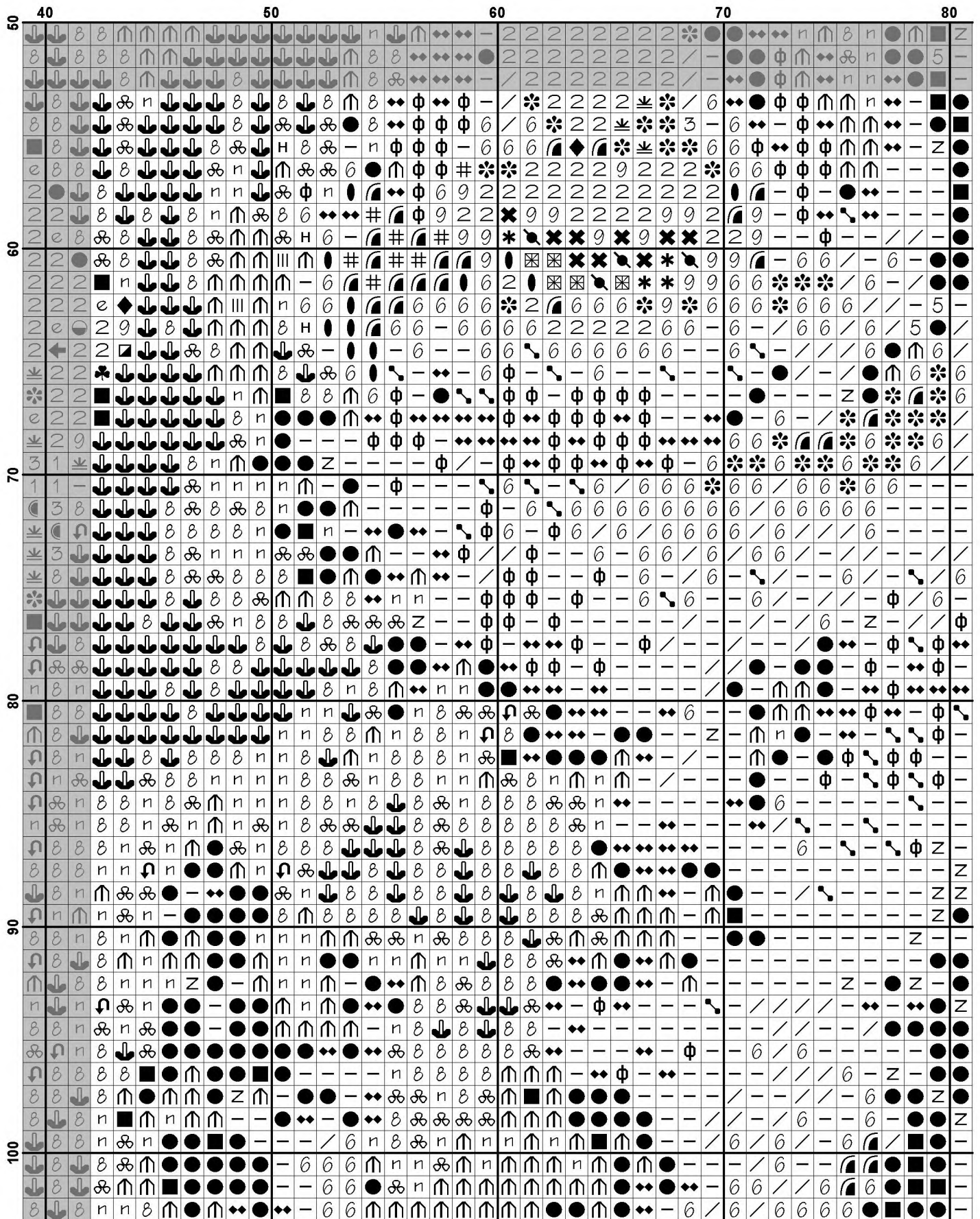
*Patterns are strictly for personal use only. It is against our copyright to make kits for sale from our designs or to sell, copy or redistribute this pattern in any form. You may not upload our patterns to any internet forums or groups or any other website. You may make 1 copy of this pattern for a working copy for your own personal use if needed.

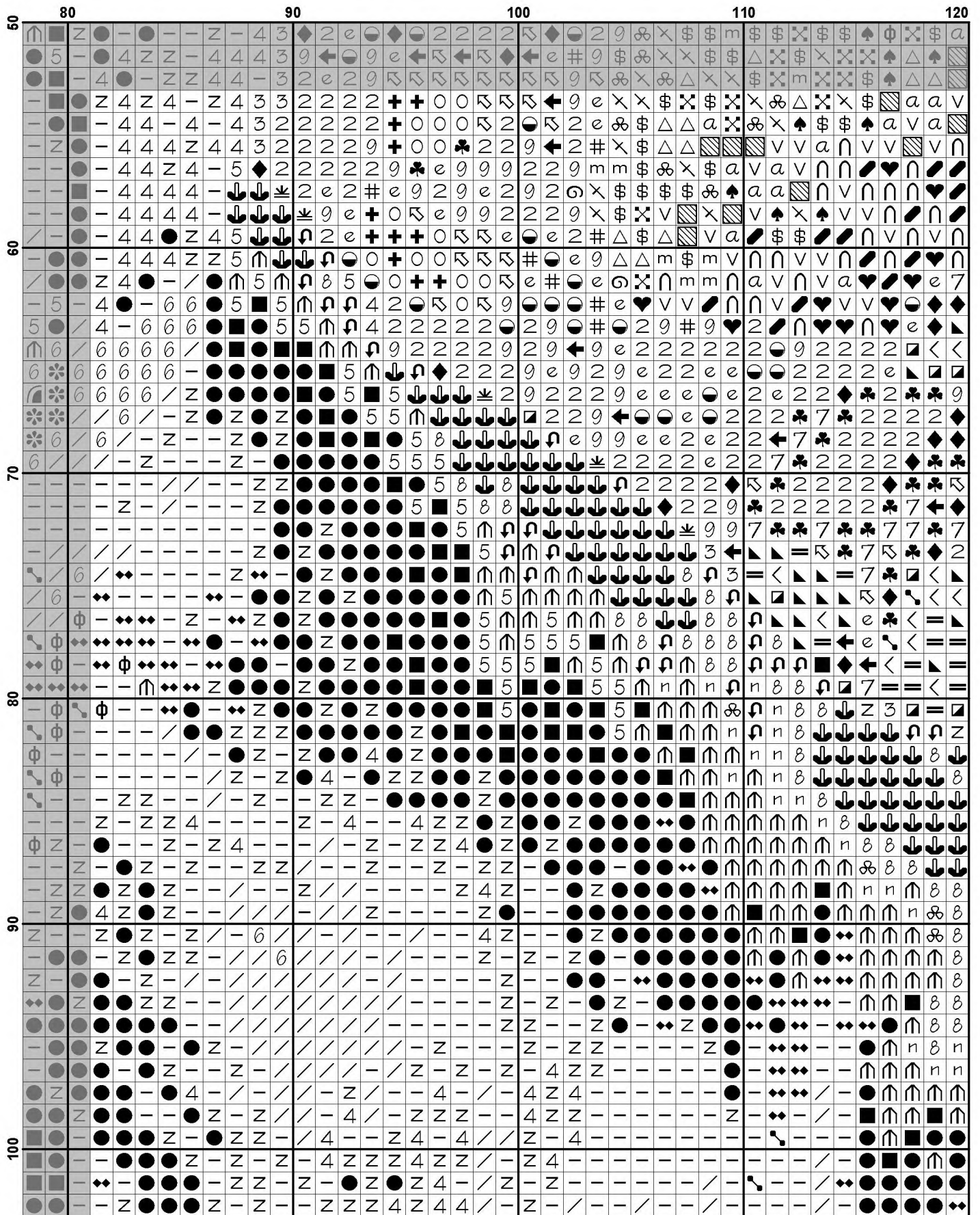


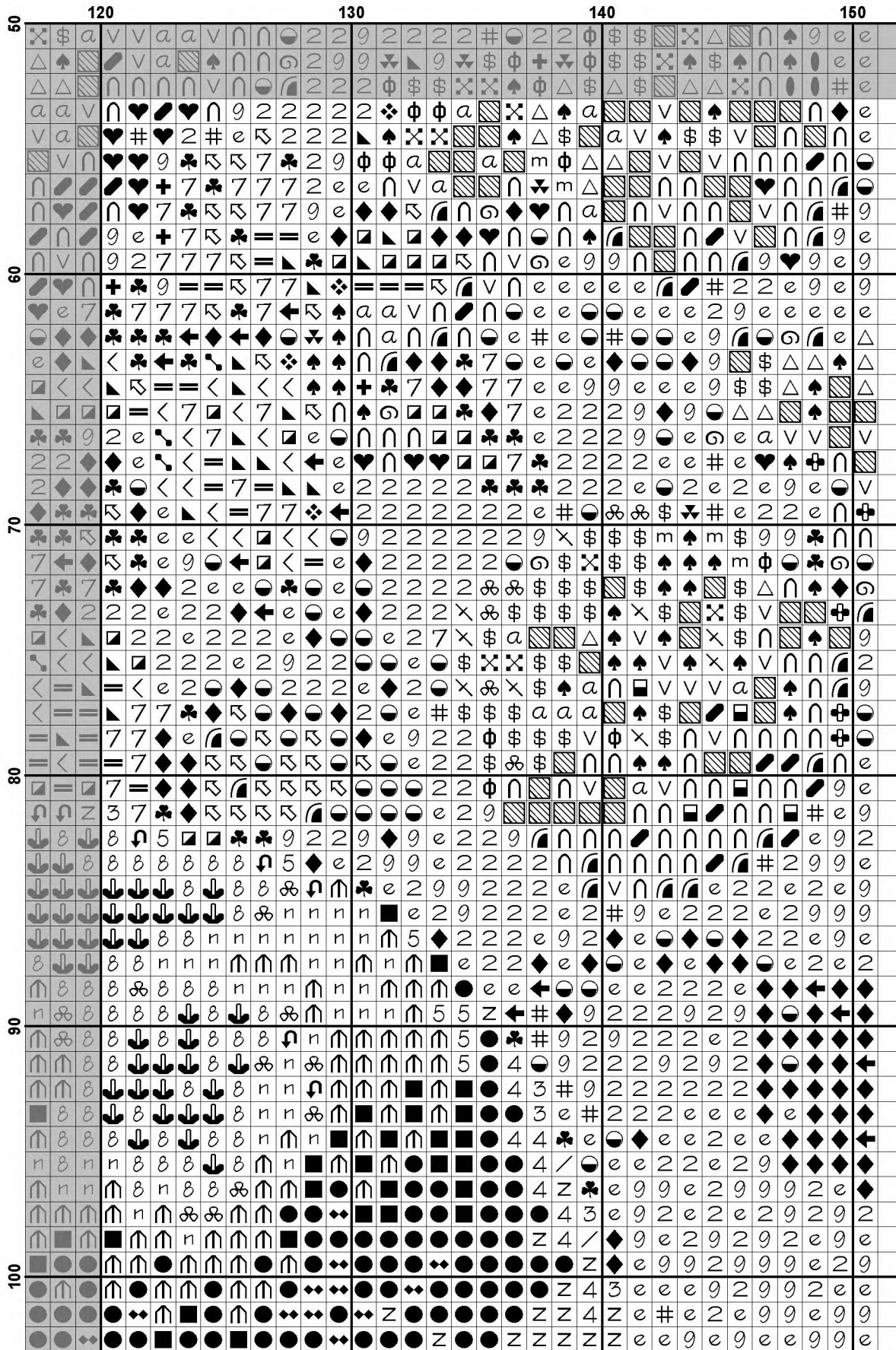


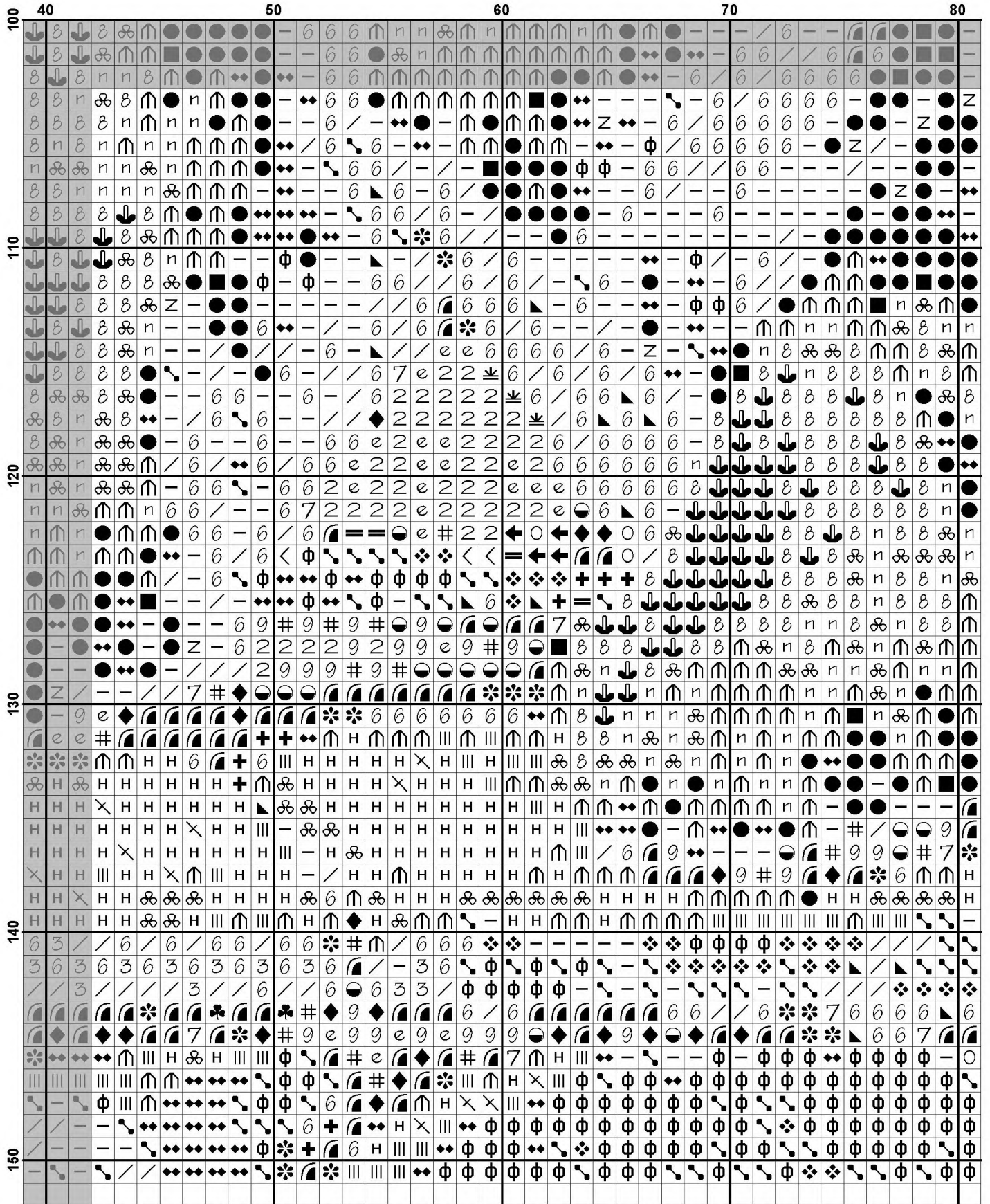


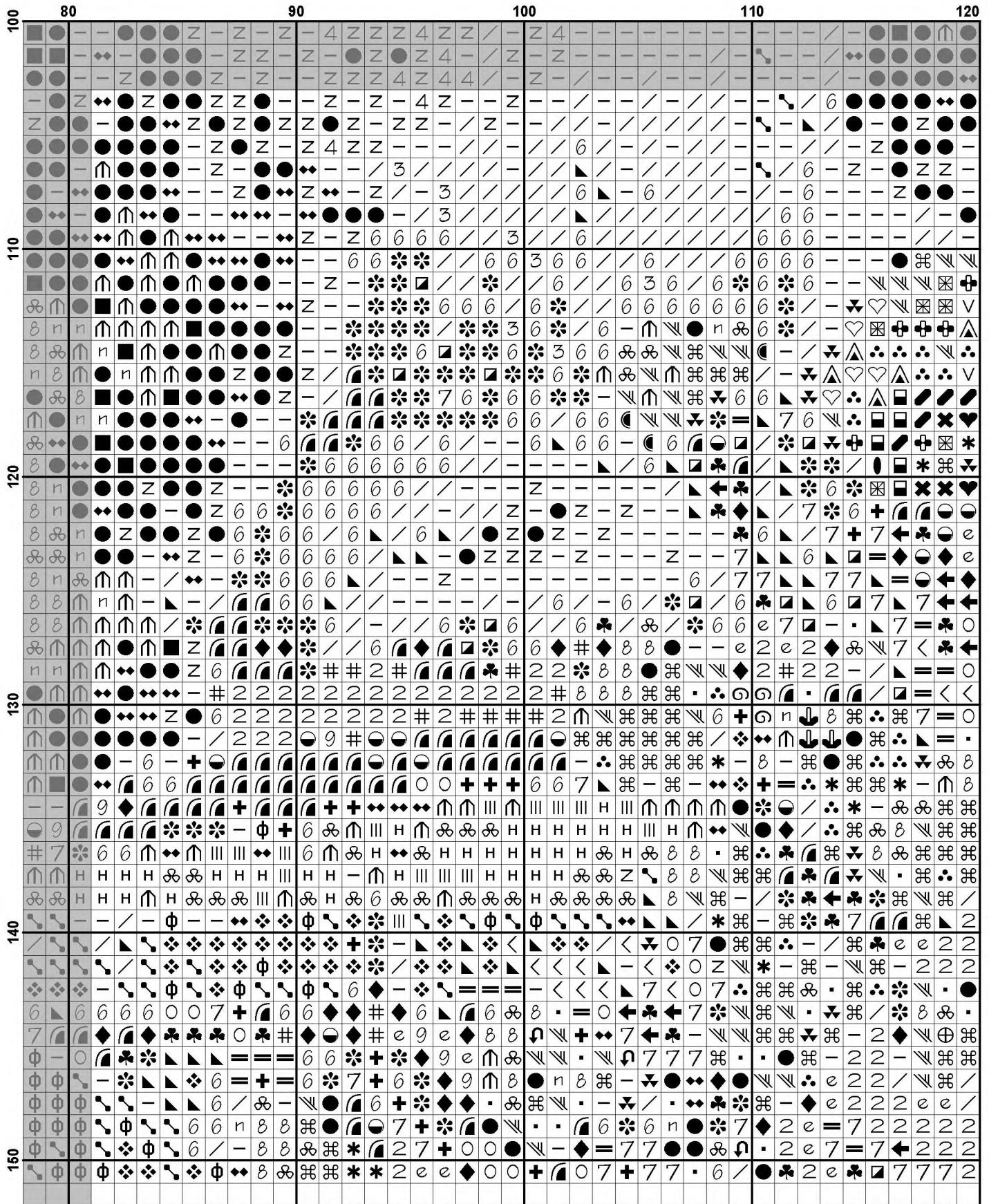








































The image displays a cross-stitch pattern for a Mini West Highland Terrier in a garden. The pattern is presented as a grid of symbols, organized into columns labeled 120, 130, 140, and 150 at the top. The rows are numbered 100, 110, 120, 130, 140, and 150 on the left side. The symbols used include various geometric shapes such as crosses, hearts, circles, and lines, as well as specific cross-stitch symbols like the 'X' and '7' symbols. The pattern is dense and detailed, covering the entire grid area.

Pattern Name: Mini West Highland Terrier in a Garden
Designed By: Artwork by Tereena Clarke
Company: Artecy Cross Stitch
Copyright: Copyright Artecy Cross Stitch. All rights Reserved.
Fabric: Aida 14, White
 150w X 150h Stitches
Size(s): 14 Count, 10-5/8w X 10-5/8h in
 16 Count, 9-3/8w X 9-3/8h in
 18 Count, 8-1/4w X 8-1/4h in

Floss Used for Full Stitches:

Symbol	Strands	Type	Number	Color
	2	DMC	150	Dusty Rose-UL VY DK
	2	DMC	160	Gray Blue-MD
	2	DMC	310	Black
	2	DMC	315	Antique Mauve-VY DK
	2	DMC	316	Antique Mauve-MD
	2	DMC	318	Steel Gray-LT
	2	DMC	326	Rose-VY DK
	2	DMC	347	Salmon-VY DK
	2	DMC	371	Mustard
	2	DMC	402	Mahogany-VY LT
	2	DMC	413	Pewter Gray-DK
	2	DMC	414	Steel Gray-DK
	2	DMC	415	Pearl Gray
	2	DMC	451	Shell Gray-DK
	2	DMC	452	Shell Gray-MD
	2	DMC	550	Violet-VY DK
	2	DMC	552	Violet-MD
	2	DMC	610	Drab Brown-DK
	2	DMC	611	Drab Brown
	2	DMC	612	Drab Brown-LT
	2	DMC	640	Beige Gray-VY DK
	2	DMC	645	Beaver Gray-VY DK
	2	DMC	647	Beaver Gray-MD
	2	DMC	648	Beaver Gray-LT
	2	DMC	738	Tan-VY LT
	2	DMC	739	Tan-UL VY LT
	2	DMC	762	Pearl Gray-VY LT
	2	DMC	777	Raspberry-VY DK
	2	DMC	779	Cocoa-DK
	2	DMC	801	Coffee Brown-DK
	2	DMC	814	Garnet-DK
	2	DMC	842	Beige Brown-VY LT
	2	DMC	844	Beaver Brown-UL DK
	2	DMC	900	Burnt Orange-DK
	2	DMC	922	Copper-LT
	2	DMC	934	Black Avocado Green
	2	DMC	936	Avocado Green-VY DK
	2	DMC	938	Coffee Brown-UL DK
	2	DMC	951	Tawny-LT
	2	DMC	961	Dusty Rose-DK
	2	DMC	977	Golden Brown-LT
	2	DMC	3012	Khaki Green-MD
	2	DMC	3031	Mocha Brown-VY DK
	2	DMC	3033	Mocha Brown-VY LT
	2	DMC	3042	Antique Violet-LT

Symbol	Strands	Type	Number	Color
	φ	2	DMC 3064	Desert Sand
	⊗	2	DMC 3350	Dusty Rose-UL DK
	⧘	2	DMC 3354	Dusty Rose-LT
	9	2	DMC 3371	Black Brown
	⊗	2	DMC 3685	Mauve-DK
	*	2	DMC 3687	Mauve
	⋯	2	DMC 3688	Mauve-MD
	⊗	2	DMC 3726	Antique Mauve-DK
	♥	2	DMC 3731	Dusty Rose-VY DK
	⊗	2	DMC 3740	Antique Violet-DK
	.	2	DMC 3743	Antique Violet-VY LT
	8	2	DMC 3770	Tawny-VY LT
	⊗	2	DMC 3776	Mahogany-LT
	∩	2	DMC 3777	Terra Cotta-VY DK
	↻	2	DMC 3781	Mocha Brown-DK
	7	2	DMC 3787	Brown Gray-DK
	◆	2	DMC 3799	Pewter Gray-VY DK
	♣	2	DMC 3803	Mauve-MD
	♠	2	DMC 3830	Terra Cotta-MD
	⊕	2	DMC 3831	Raspberry-DK
	//	2	DMC 3834	Grape-DK
	☾	2	DMC 3835	Grape-MD
	×	2	DMC 3856	Mahogany-UL VY LT
	6	2	DMC 3860	Cocoa
	-	2	DMC 3861	Cocoa-LT
	+	2	DMC 3862	Mocha Beige-DK
	◆	2	DMC 3864	Mocha Beige-LT
	↴	2	DMC 3865	Winter White

Notes:

The middle of this pattern can be found on page 6 and is 76 stitches across and 76 stitches down.

Pattern layout using page numbers in top left.

```

1  2  3  4
5  6  7  8
9 10 11 12

```

Usage Summary

Strands Per Skein: 6

Skein Length: 313.0 in

Type	Number	Full	Half	Quarter	Petite	Back(in)	Str(in)	Spec(in)	French	Bead	Skein Est.
DMC 150	150	57	0	0	0	0.0	0.0	0.0	0	0	1.000
DMC 160	160	118	0	0	0	0.0	0.0	0.0	0	0	1.000
DMC 310	310	1912	0	0	0	0.0	0.0	0.0	0	0	2.000
DMC 315	315	78	0	0	0	0.0	0.0	0.0	0	0	1.000
DMC 316	316	211	0	0	0	0.0	0.0	0.0	0	0	1.000
DMC 318	318	266	0	0	0	0.0	0.0	0.0	0	0	1.000
DMC 326	326	76	0	0	0	0.0	0.0	0.0	0	0	1.000
DMC 347	347	85	0	0	0	0.0	0.0	0.0	0	0	1.000
DMC 371	371	334	0	0	0	0.0	0.0	0.0	0	0	1.000
DMC 402	402	97	0	0	0	0.0	0.0	0.0	0	0	1.000
DMC 413	413	135	0	0	0	0.0	0.0	0.0	0	0	1.000
DMC 414	414	319	0	0	0	0.0	0.0	0.0	0	0	1.000
DMC 415	415	130	0	0	0	0.0	0.0	0.0	0	0	1.000
DMC 451	451	747	0	0	0	0.0	0.0	0.0	0	0	1.000
DMC 452	452	1037	0	0	0	0.0	0.0	0.0	0	0	1.000
DMC 550	550	149	0	0	0	0.0	0.0	0.0	0	0	1.000
DMC 552	552	89	0	0	0	0.0	0.0	0.0	0	0	1.000
DMC 610	610	195	0	0	0	0.0	0.0	0.0	0	0	1.000
DMC 611	611	281	0	0	0	0.0	0.0	0.0	0	0	1.000
DMC 612	612	250	0	0	0	0.0	0.0	0.0	0	0	1.000
DMC 640	640	564	0	0	0	0.0	0.0	0.0	0	0	1.000
DMC 645	645	295	0	0	0	0.0	0.0	0.0	0	0	1.000
DMC 647	647	346	0	0	0	0.0	0.0	0.0	0	0	1.000
DMC 648	648	173	0	0	0	0.0	0.0	0.0	0	0	1.000
DMC 738	738	135	0	0	0	0.0	0.0	0.0	0	0	1.000
DMC 739	739	337	0	0	0	0.0	0.0	0.0	0	0	1.000
DMC 762	762	130	0	0	0	0.0	0.0	0.0	0	0	1.000
DMC 777	777	67	0	0	0	0.0	0.0	0.0	0	0	1.000
DMC 779	779	437	0	0	0	0.0	0.0	0.0	0	0	1.000
DMC 801	801	48	0	0	0	0.0	0.0	0.0	0	0	1.000
DMC 814	814	64	0	0	0	0.0	0.0	0.0	0	0	1.000
DMC 842	842	739	0	0	0	0.0	0.0	0.0	0	0	1.000
DMC 844	844	379	0	0	0	0.0	0.0	0.0	0	0	1.000
DMC 900	900	41	0	0	0	0.0	0.0	0.0	0	0	1.000
DMC 922	922	45	0	0	0	0.0	0.0	0.0	0	0	1.000
DMC 934	934	1132	0	0	0	0.0	0.0	0.0	0	0	1.000
DMC 936	936	269	0	0	0	0.0	0.0	0.0	0	0	1.000
DMC 938	938	118	0	0	0	0.0	0.0	0.0	0	0	1.000
DMC 951	951	421	0	0	0	0.0	0.0	0.0	0	0	1.000
DMC 961	961	40	0	0	0	0.0	0.0	0.0	0	0	1.000
DMC 977	977	32	0	0	0	0.0	0.0	0.0	0	0	1.000
DMC 3012	3012	176	0	0	0	0.0	0.0	0.0	0	0	1.000
DMC 3031	3031	443	0	0	0	0.0	0.0	0.0	0	0	1.000
DMC 3033	3033	429	0	0	0	0.0	0.0	0.0	0	0	1.000
DMC 3042	3042	115	0	0	0	0.0	0.0	0.0	0	0	1.000
DMC 3064	3064	353	0	0	0	0.0	0.0	0.0	0	0	1.000
DMC 3350	3350	133	0	0	0	0.0	0.0	0.0	0	0	1.000
DMC 3354	3354	82	0	0	0	0.0	0.0	0.0	0	0	1.000
DMC 3371	3371	443	0	0	0	0.0	0.0	0.0	0	0	1.000
DMC 3685	3685	92	0	0	0	0.0	0.0	0.0	0	0	1.000
DMC 3687	3687	139	0	0	0	0.0	0.0	0.0	0	0	1.000

Type	Number	Full	Half	Quarter	Petite	Back(in)	Str(in)	Spec(in)	French	Bead	Skein	Est.
DMC 3688	72	0	0	0	0	0.0	0.0	0.0	0	0	1.000	
DMC 3726	187	0	0	0	0	0.0	0.0	0.0	0	0	1.000	
DMC 3731	46	0	0	0	0	0.0	0.0	0.0	0	0	1.000	
DMC 3740	544	0	0	0	0	0.0	0.0	0.0	0	0	1.000	
DMC 3743	72	0	0	0	0	0.0	0.0	0.0	0	0	1.000	
DMC 3770	870	0	0	0	0	0.0	0.0	0.0	0	0	1.000	
DMC 3776	69	0	0	0	0	0.0	0.0	0.0	0	0	1.000	
DMC 3777	141	0	0	0	0	0.0	0.0	0.0	0	0	1.000	
DMC 3781	177	0	0	0	0	0.0	0.0	0.0	0	0	1.000	
DMC 3787	419	0	0	0	0	0.0	0.0	0.0	0	0	1.000	
DMC 3799	640	0	0	0	0	0.0	0.0	0.0	0	0	1.000	
DMC 3803	208	0	0	0	0	0.0	0.0	0.0	0	0	1.000	
DMC 3830	82	0	0	0	0	0.0	0.0	0.0	0	0	1.000	
DMC 3831	43	0	0	0	0	0.0	0.0	0.0	0	0	1.000	
DMC 3834	205	0	0	0	0	0.0	0.0	0.0	0	0	1.000	
DMC 3835	262	0	0	0	0	0.0	0.0	0.0	0	0	1.000	
DMC 3856	67	0	0	0	0	0.0	0.0	0.0	0	0	1.000	
DMC 3860	695	0	0	0	0	0.0	0.0	0.0	0	0	1.000	
DMC 3861	1274	0	0	0	0	0.0	0.0	0.0	0	0	1.000	
DMC 3862	164	0	0	0	0	0.0	0.0	0.0	0	0	1.000	
DMC 3864	433	0	0	0	0	0.0	0.0	0.0	0	0	1.000	
DMC 3865	1047	0	0	0	0	0.0	0.0	0.0	0	0	1.000	